

# NEW SLY S

L'evoluzione del sistema Sly, realizzata per installazione diretta a soffitto in fila continua. Caratterizzata da un'altissima efficienza delle proprie ottiche, ed eccellente controllo dell'abbagliamento.

**Corpo:** lamiera di acciaio 6/10, verniciata con polveri poliestere in grado di garantire un'ottima resistenza agli agenti chimici.

**Ottiche:** in PMMA, disponibili in 5 possibili fasci (60°- 90° come standard), sviluppate con innovativo sistema ELA (Extended Light Area) e CLC (Constant Light Colour).

**Moduli LED:** alimentati a 250mA e 350mA, realizzati con sistema B/C, per la riduzione di ombre e riflessi.

**Temperatura colore:** 3000/4000K. CRI>80.

**Durata utile:** 54.000h L80 B20 @ta25 54.000h L70 B50@tamax.

**Alimentazione:** driver 220-240V 50/60Hz, ripple free, SP system, Active PFC.

#### Disponibile a richiesta:

- versione L=560mm modulo singolo (solo ON/OFF);
- giunto meccanico per L=560mm modulo singolo;
- ottiche: 90° TL, AS, R2A;
- driver dimmerabile DALI;
- emergenza 1-3h SA interna;
- modulo cieco;
- cablaggio passante disponibile anche con inversione di fase per linee trifase;
- snodo rotazione (180°).



*The evolution of Sly system, Sly S was designed for direct ceiling mount installation, as continuous row system. Characterized by a very high efficiency, visual comfort and glare control.*

**Body:** 6/10 steel sheet, painted with polyester powders to guarantee an excellent resistance to chemical agents.

**Optics:** PMMA anti-UV, available in 5 possible beams (60°- 90° as standard) developed with innovative ELA (Extended Light Area) and CLC (Constant Light Color) systems.

**LED modules:** powered at 250mA and 350mA, realized with B/C system, for the reduction of shadows and reflections.

**Color temperature:** 3000/4000K. CRI>80.

**Expected lifetime:** 54.000h L80 B20 @ta25 54.000h L70 B50@tamax.

**Power:** 220-240V 50/60Hz driver, ripple free, SP system, Active PFC.

#### Available on request:

- L=560mm single module version (only ON/OFF);
- joint for through wiring L=560mm single module version;
- 90° TL, AS, R2A optics;
- DALI dimmable driver;
- internal 1-3h maintained emergency;
- blind module;
- pass-through wiring available also with phase inversion for three-phase lines;
- rotating joint (180°).

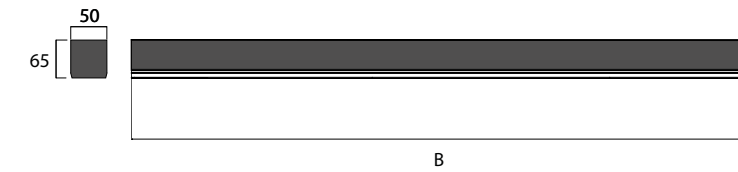
COLORI DISPONIBILI Available colors

Nero RAL 9005 RAL 9005 Black

Bianco White

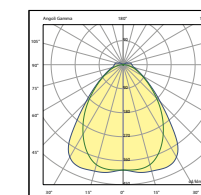
Antracite RAL 7039 RAL 7039 Anthracite

Sostituire la 6° cifra del codice del prodotto per cambiare colore.  
Replace the 6th figure of the product code to change colour.

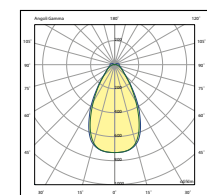


CODICE Code	CABLAGGIO Wiring	POTENZA Power(W)	FLUSSO NOMINALE Typical flux(lm)	FLUSSO NETTO Net output(lm)	CORRENTE Current(mA)	APERTURA FASCIO Beam angle(°)	B (mm)	COLORE Color	PESO NETTO Net weight(Kg)	
624632.217	96 LED	17W	2790	2427	250	60	1130	■	2,60	
624632.326	144 LED	26W	4185	3641	250	60	1690	■	3,60	
624632.224	96 LED	24W	3810	3315	350	60	1130	■	2,60	
624632.336	144 LED	36W	5715	4972	350	60	1690	■	3,60	
625632.217	96 LED	17W	2790	2455	250	90	1130	■	2,60	
625632.326	144 LED	26W	4185	3683	250	90	1690	■	3,60	
625632.224	96 LED	24W	3810	3353	350	90	1130	■	2,60	
625632.336	144 LED	36W	5715	5029	350	90	1690	■	3,60	
624002.002	Sly Modulo cieco L1130 + C/P 3x1,5mmq / Pass-through module L1130 + T/w 3x1,5mmq								■	2,10
624002.003	Sly Modulo cieco L1690 + C/P 3x1,5mmq / Pass-through module L1690 + T/w 3x1,5mmq								■	3,00
962400.000	Giunto meccanico per fila continua / Joint for through wiring									0,29
962402.001	Testata alimentazione Sly 3p / 3p Sly Side power supply								■	0,10
962402.004	Testata alimentazione Sly 5p / 5p Sly Side power supply								■	0,10
962402.002	Tappo laterale / Side cap								■	0,04
962402.005	Snodo rotazione 180° / 180° rotating joint 3p								■	0,18
962402.006	Snodo rotazione 180° / 180° rotating joint 5p								■	0,18
962402.008	Snodo di rotazione cieco [180°] / Rotating joint cieco [180°]								■	0,18
code + DALI	Driver dimmerabile DALI   DALI dimmable driver									
code + 01	Kit Emergenza 1h   1h Emergency kit									0,35
code + 03	Kit Emergenza 3h   3h Emergency kit									0,54

Kit Emergenza 3h + DALI **escluso** per versione 1130mm / Kit Emergenza + DALI **excluded** for 1130mm versione



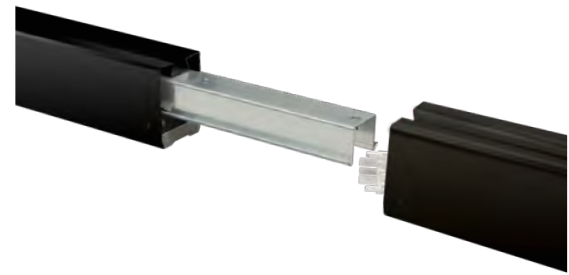
Sly S 26W 250mA 90°



Sly S 24W 350mA 60°



Componenti - Components



● Giunto per fila continua  
Joint for continuous line  
962400.000



● Clips per fissaggio a soffito, **fornite di serie**  
Ceiling fixing clips, **supplied as standard**



● Sly s/c Modulo cieco L1130 mm  
Sly s/c Blind module L1130 mm  
624002.002

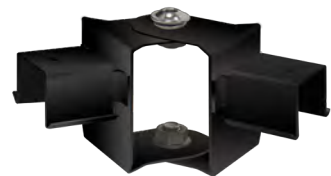
Sly s/c Modulo cieco L1690 mm  
Sly s/c Blind module L1690 mm  
624002.003



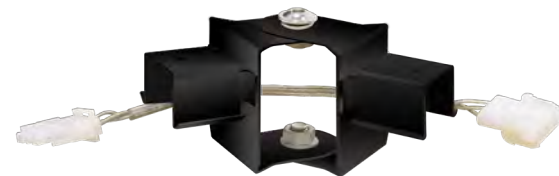
● Tappo laterale  
Side cap  
962402.002



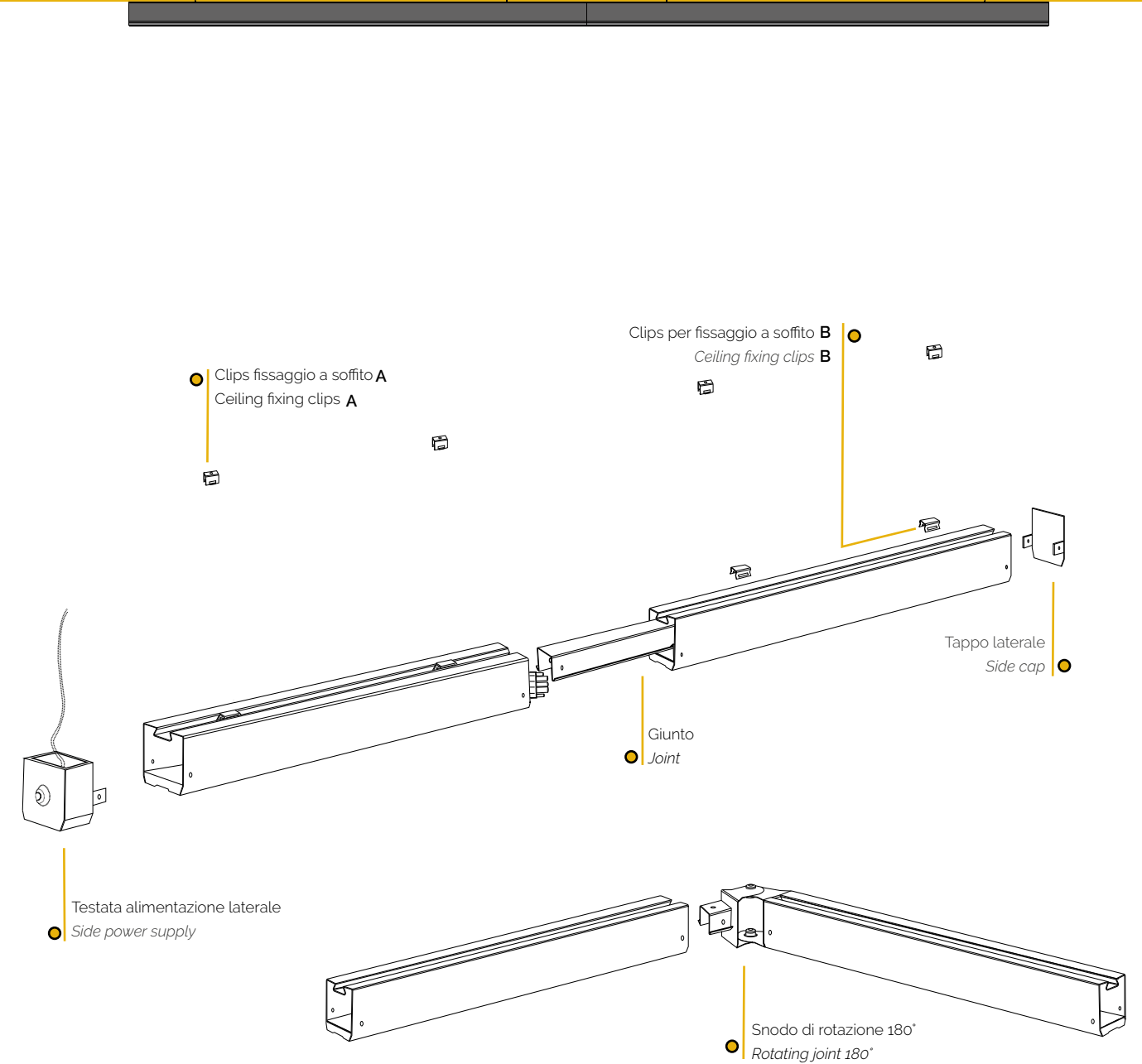
● Testata alimentazione laterale  
Side power supply  
3p: 962402.001  
5p: 962402.004



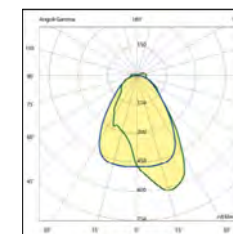
● Snodo di rotazione cieco (180°)  
Rotating joint cieco (180°)  
961301.008



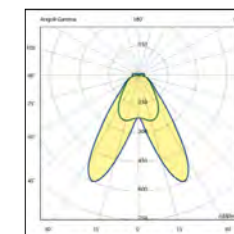
● Snodo di rotazione (180°)  
Rotating joint (180°)  
3p: 962402.005  
5p: 962402.006



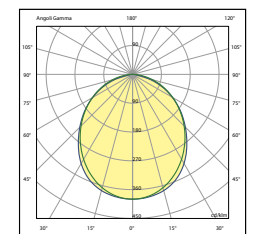
Ottiche a richiesta / Optics on request



Sly AS 24W 350mA



Sly R2A 17W 250mA



Sly 90° TL 36W 350mA